



Coronavirus Disease 2019 (COVID-19) Situation Update – 14 June 2020

Data curated by Johns Hopkins CSSE, including DHHS, WHO, CDC, ECDC, NHC, and DXY and current as of 1:15 5 June 2020

Highlights

- Army National Guard troops will begin standing down. Test Nebraska is moving to use the local healthcare infrastructure within the health district the week of June 22nd, at Columbus Community Hospital.
- Discussion about phased long-term care facility reopening began earlier this week with DHHS.
- This week, ECDHD and DHHS began planning for mass vaccine clinics in preparation ahead of development of the COVID-19 vaccine anticipated later this year.
- With the help of state partners, ECDHD began developing a risk assessment tool to help guide decision making based on local COVID conditions.

SITUATION IN NUMBERS

Boone County

- Cumulative cases: 7
- Recovered cases: 6
- Deaths: 0
- Positivity rate*: 4.3%

Colfax County

- Cumulative cases: 643
- Recovered cases: 620
- Deaths: 4
- Positivity rate: 49.0%

Nance County

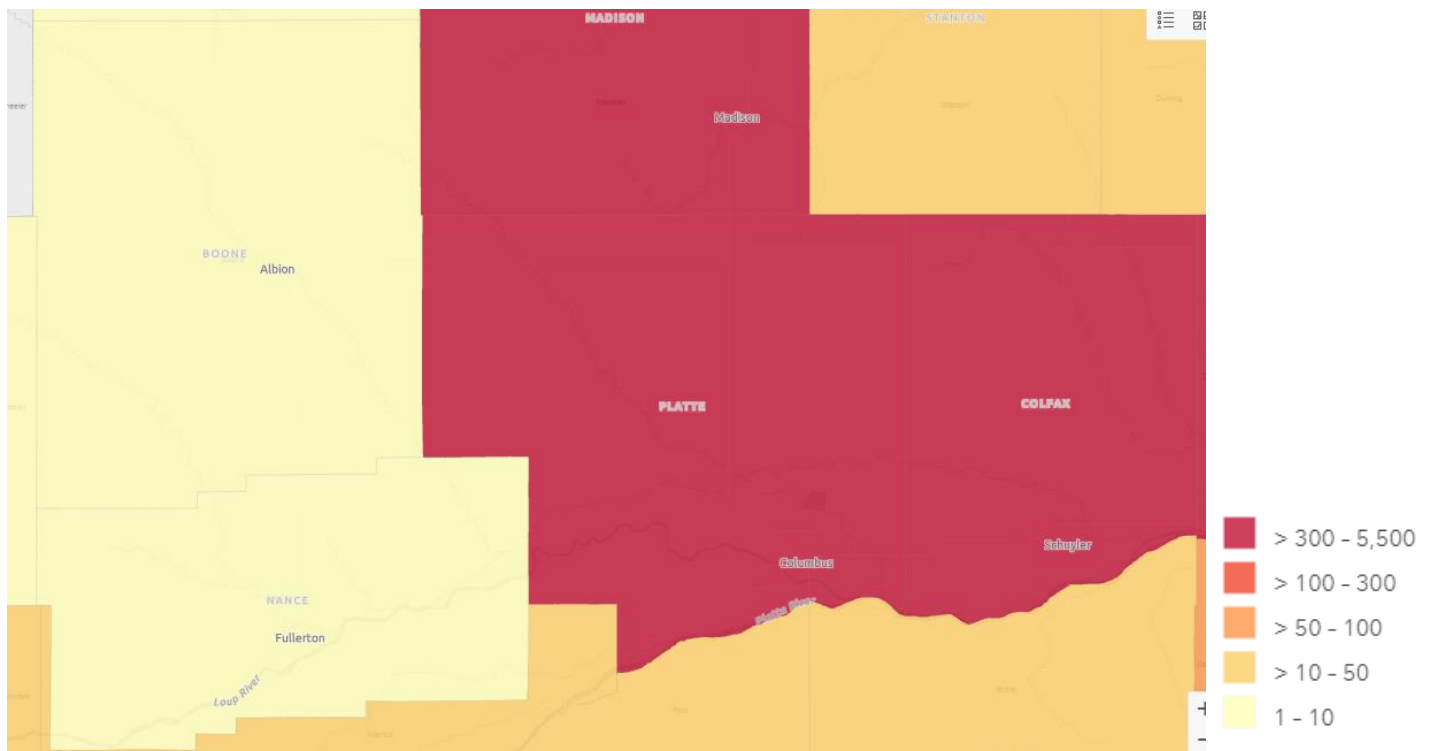
- Cumulative cases: 4
- Recovered cases: 4
- Deaths: 0
- Positivity rate: 3.0%

Platte County

- Cumulative cases: 639
- Recovered cases: 601
- Deaths: 2
- Positivity rate: 24.6%

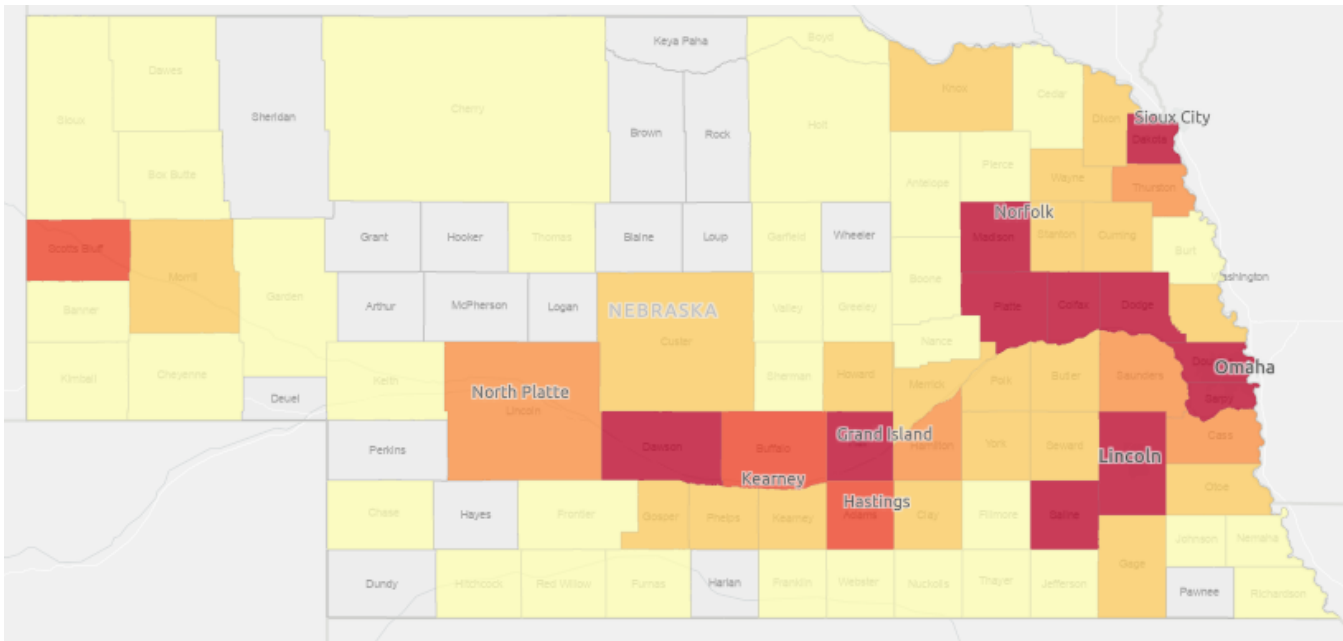
*Number of confirmed positive cases divided by number of tests times 100

Figure 1. Cumulative confirmed cases of COVID-19 in the East Central District, 12 June 2020



Source: Nebraska Department of Health and Human Services

Figure 2. Nebraska counties reporting laboratory-confirmed cases of COVID-19, 5 June 2020



Source: Nebraska Department of Health and Human Services

Number of Positive Tests by County in Nebraska

5,403 Douglas	35 Dixon	6 Webster
1,719 Dakota	34 Custer	6 Johnson
1,559 Hall	34 Cuming	6 Franklin
1,428 Lancaster	30 Seward	5 Red Willow
844 Dawson	26 Wayne	4 Sherman
842 Sarpy	24 Clay	4 Garden
643 Colfax	21 Stanton	4 Nemaha
639 Platte	20 Phelps	4 Nance
611 Dodge	13 Gosper	3 Box Butte
518 Saline	12 Polk	3 Greeley
331 Madison	12 Kearney	2 Keith
277 Adams	11 Otoe	1 Nuckolls
177 Buffalo	11 Knox	1 Boyd
62 Scotts Bluff	11 Morrill	1 Thomas
63 Thurston	10 Cheyenne	1 Holt
59 Cass	9 Fillmore	1 Banner
56 Saunders	9 Burt	1 Garfield
56 Hamilton	9 Jefferson	1 Dawes
52 Lincoln	9 Furnas	1 Hitchcock
50 Butler	8 Cedar	1 Chase
45 Gage	8 Kimball	1 Sioux
44 Howard	8 Antelope	1 Thayer
38 Washington	7 Boone	1 Richardson
37 Merrick	7 Valley	1 Frontier
37 York	6 Pierce	
1 Cherry		

Test Nebraska

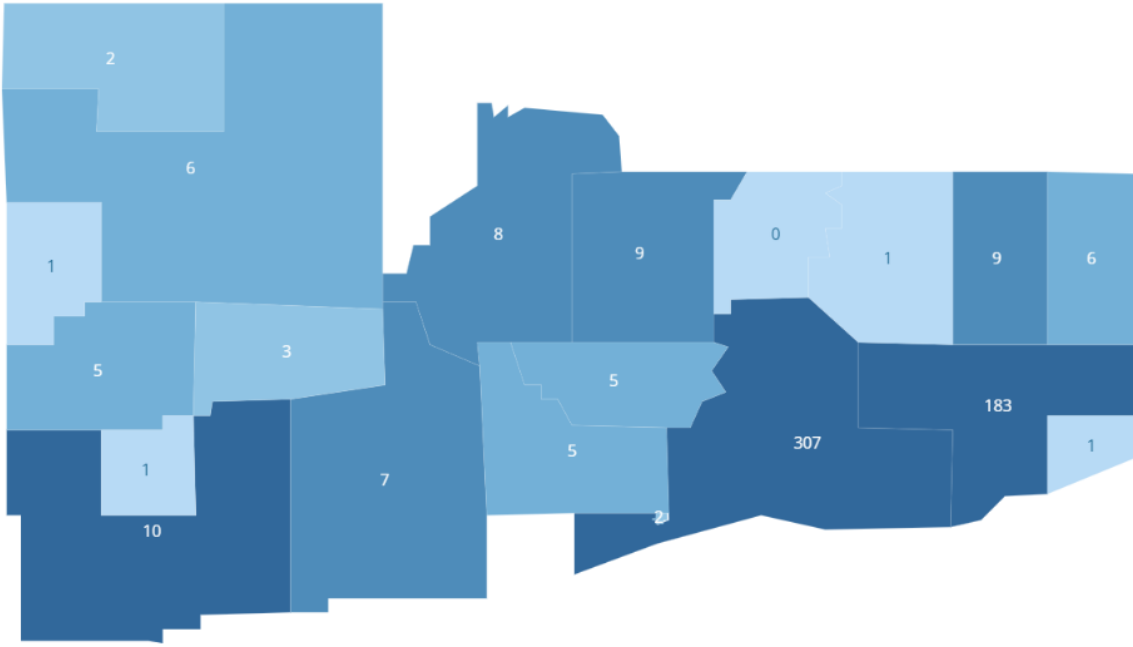


Figure 3. Tests by Patient Residence Zip Code (Total 573)

Source: Test Nebraska

Meat Packing/Processing	25.56%
Retired	17.64%
Manufacturing	8.07%
Health Care Provider	4.63%
Other Industry	3.29%
Retail	2.54%
Education	2.54%
Unemployed	2.24%
Homemaker	1.79%
Construction	1.79%
Other Health Care and S...	1.64%
Agricultura, silvicultura, ...	1.49%
Other	26.76%

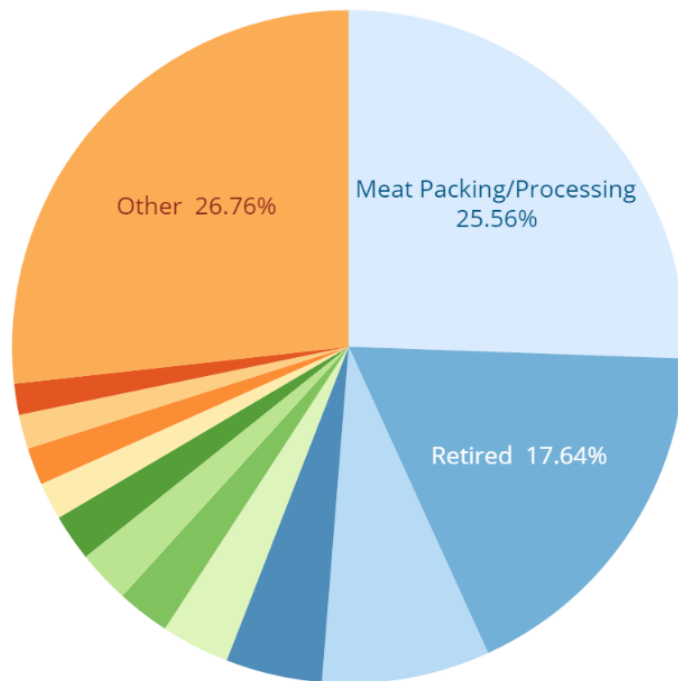


Figure 4. Completed Tests by Occupation

Source: Test Nebraska

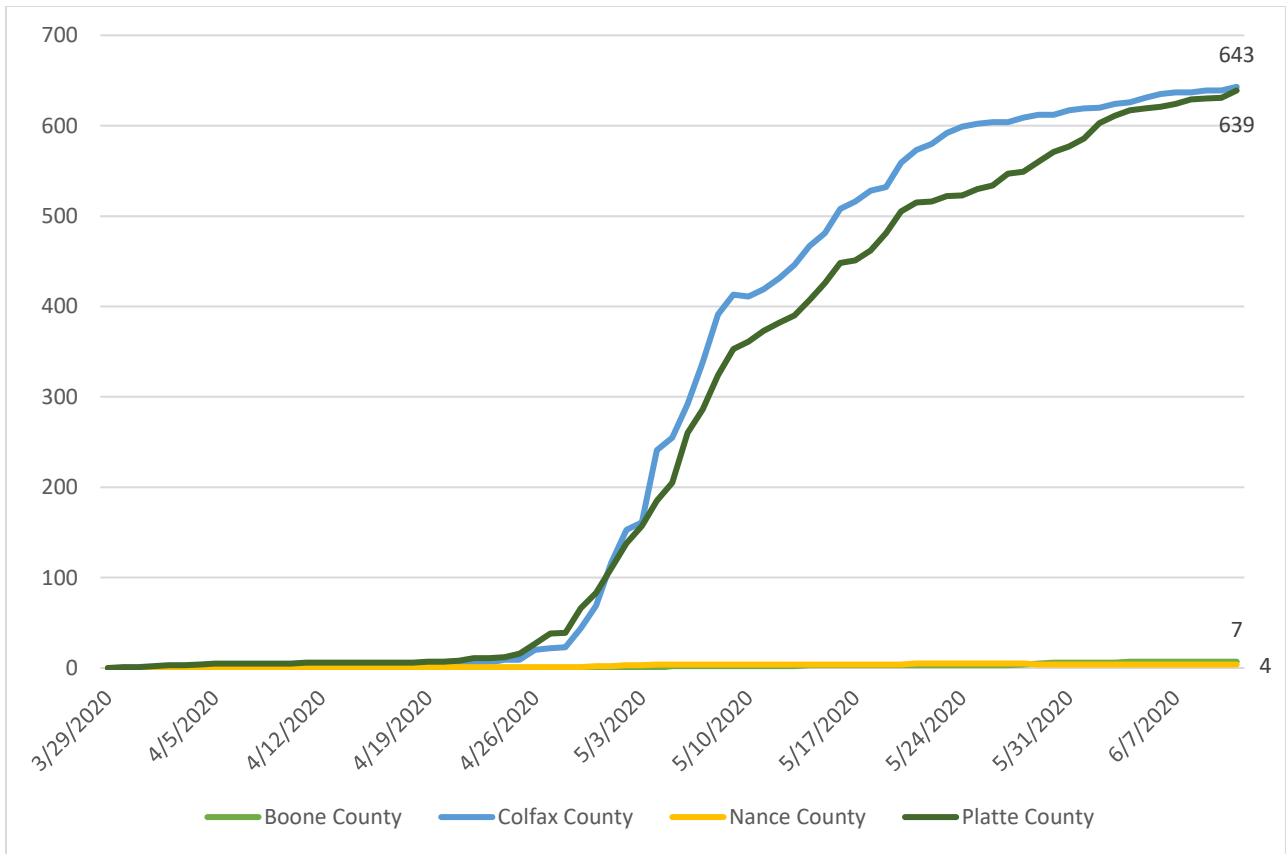


Figure 5. Confirmed, cumulative cases within the East Central District

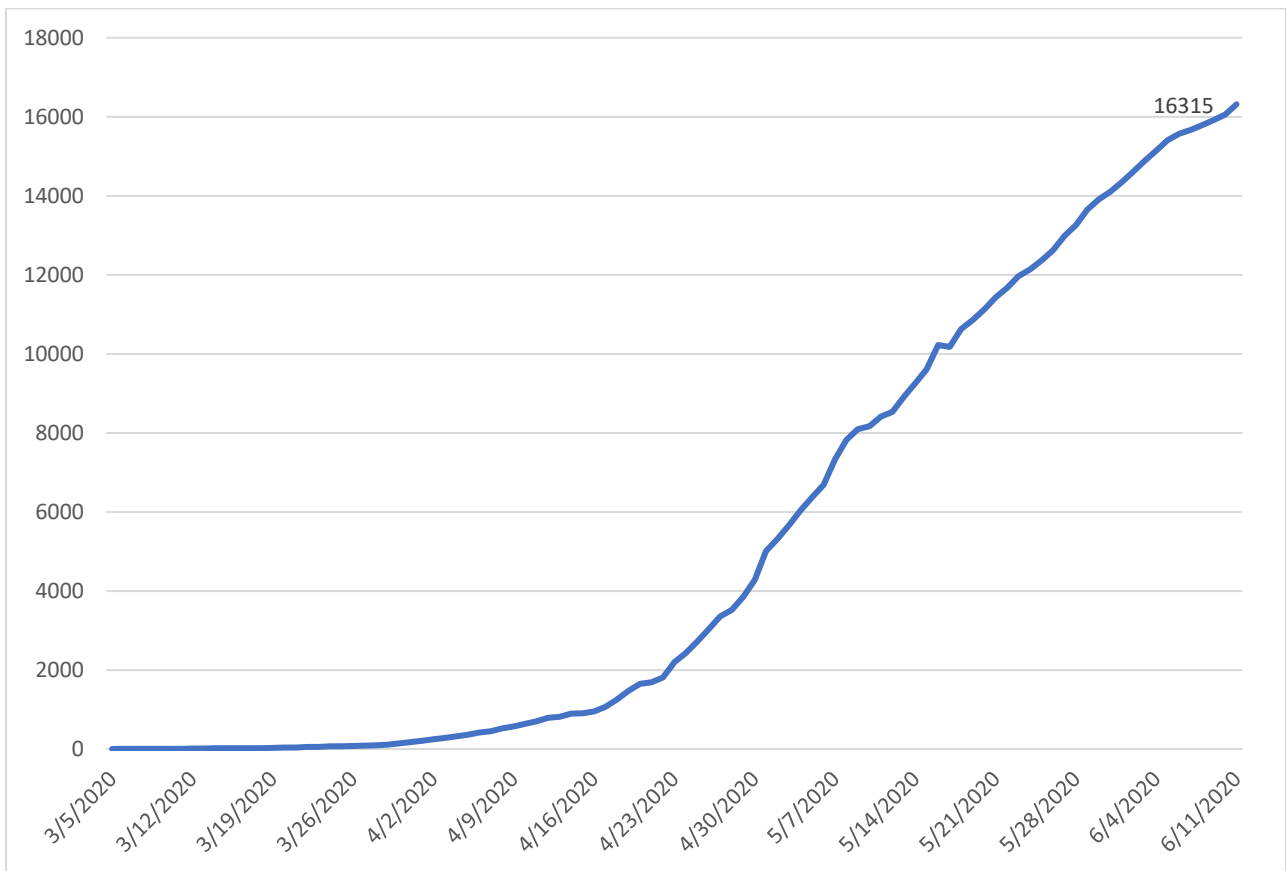


Figure 6. Confirmed, cumulative cases within Nebraska

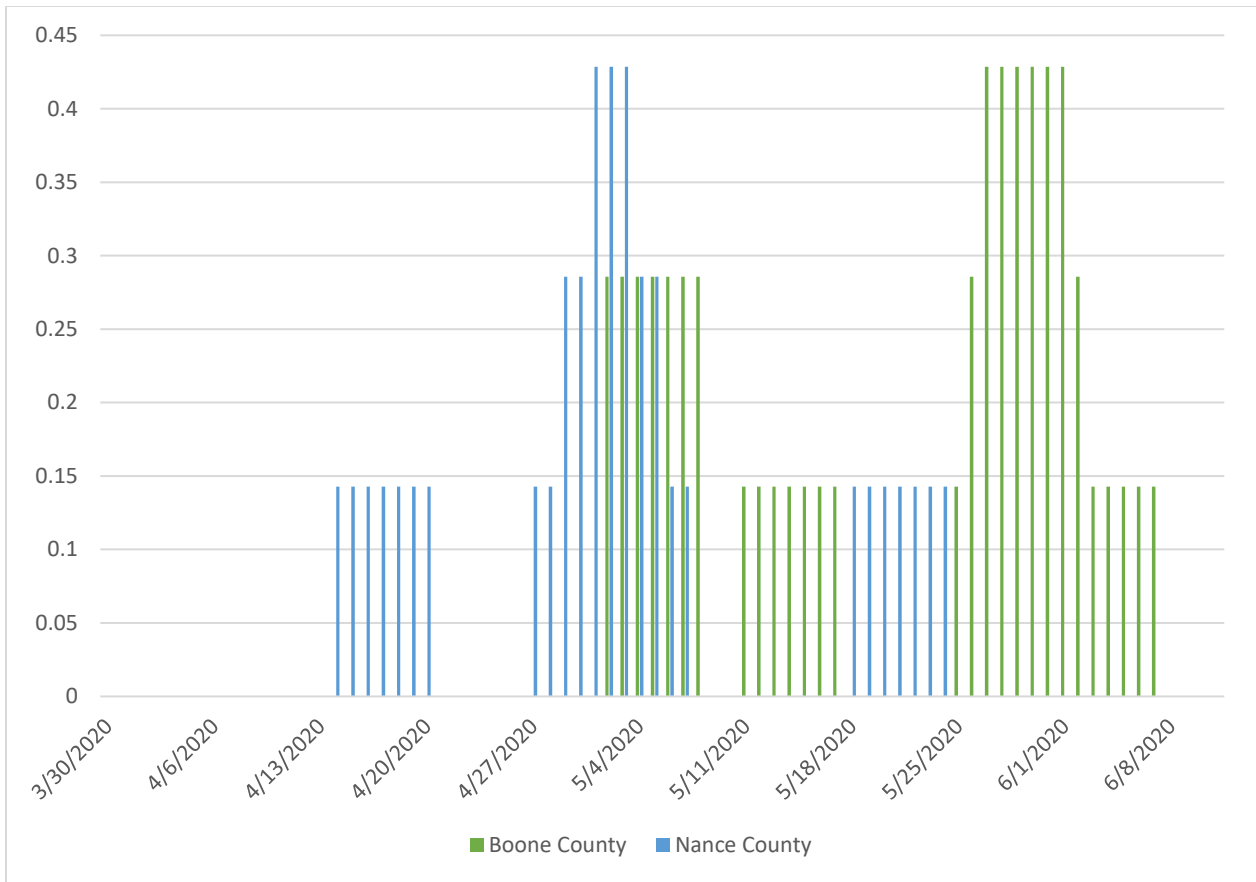


Figure 7. Seven-day average of confirmed cases within East Central District, Boone and Nance Counties

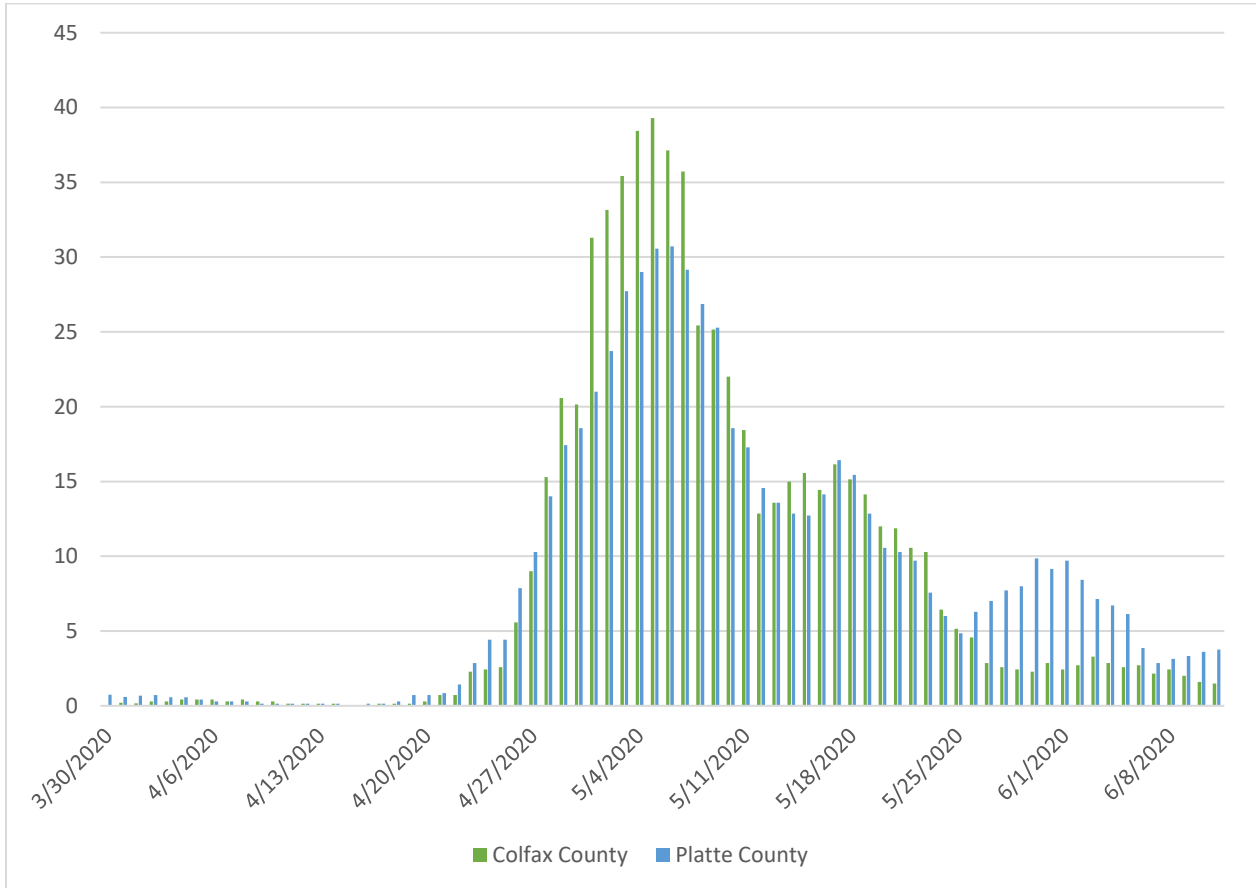


Figure 8. Seven-day average of confirmed cases within East Central District, Colfax and Platte Counties

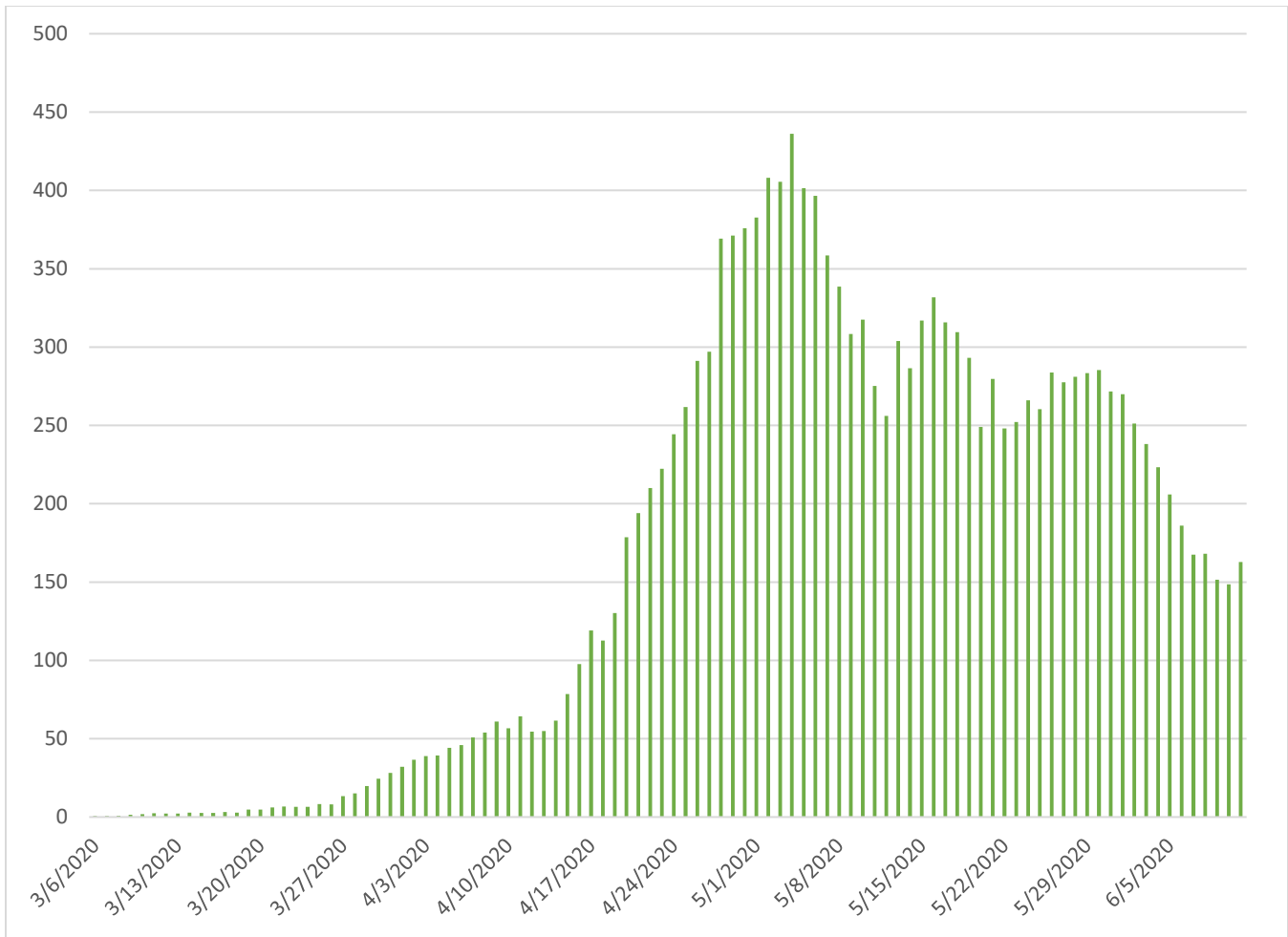


Figure 9. Seven-day average of confirmed cases within Nebraska

STRATEGIC OBJECTIVES

ECDHD's strategic objectives for this response are to:

- Interrupt human-to-human transmission including to reduce secondary infections among close contacts and health care workers, prevent transmission amplification events, and prevent further spread.*
- Identify, isolate and care for patients early, including to provide optimized care for infected patients.
- Communicate critical risk and event information to all communities and counter misinformation.
- Minimize social and economic impact through multisectoral partnerships.

*This can be achieved through a combination of public health measures, such as rapid identification, diagnosis and management of the cases, identification and follow-up with contacts, partnership in infection prevention and control in health care settings, implementation of health measures for travelers, raising awareness in the population and risk communication.

RECOMMENDATIONS AND ADVICE FOR THE PUBLIC

Get the facts on COVID-19 from reliable sources to help you accurately determine your risks so that you can take reasonable precautions. Seek guidance from your healthcare provider, ECDHD, DHHS, CDC, or your employer for accurate information on COVID-19.

It is important to be informed of the situation and take appropriate measures to protect yourself and your family. For most people, COVID-19 infection will cause mild illness; however, it can make some people very ill and, in some people, it can be fatal. Older people, and those with pre-existing medical conditions (such as cardiovascular disease, chronic respiratory disease or diabetes) are at greater risk for severe disease. Stay up to date with the latest information from the CDC [here](#).

Information for Individuals¹

Directed Health Measures in effect for Boone, Colfax, Nance and Platte counties from June 1-June 30

<http://dhhs.ne.gov/Documents/DHM-ECHD-002.pdf>

Reopening guidelines: <http://dhhs.ne.gov/Documents/COVID-19-Outline-of-Changes-to-Upcoming-DHMs-Phase-II.pdf>

Centers for Disease Control and Prevention (CDC) <https://www.cdc.gov/coronavirus/2019-ncov/index.html>

Frequently Asked Questions: <https://www.cdc.gov/coronavirus/2019-ncov/faq.html>

Know the facts about coronavirus disease 2019 (COVID-19) and help stop the spread of rumors: <https://www.cdc.gov/coronavirus/2019-ncov/about/share-facts-stop-fear.html>

Information for Schools²

CDC Interim Guidance for Administrators of US Childcare Programs and K-12 Schools to Plan, Prepare, and Respond to Coronavirus Disease 2019 (COVID-19) <https://www.cdc.gov/coronavirus/2019-ncov/specific-groups/guidance-for-schools.html>

¹ Information adapted from WHO guidance

² Information adapted from Douglas County Health Department

Frequently asked Questions about COVID-19: <https://www.cdc.gov/coronavirus/2019-ncov/faq.html>

Questions about COVID-19 in Children: <https://www.cdc.gov/coronavirus/2019-ncov/specific-groups/children-faq.html>

COVID-19 in Pregnant Women: <https://www.cdc.gov/coronavirus/2019-ncov/specific-groups/pregnancy-faq.html>

Planning for pandemic influenza can easily be adapted for COVID-19

CDC Get Your School Ready for Pandemic Flu (April 2017): <https://www.cdc.gov/nonpharmaceutical-interventions/pdf/gr-pan-flu-ed-set.pdf>

Information for Businesses

Reopening guidelines: <http://dhhs.ne.gov/Documents/COVID-19-Outline-of-Changes-to-Upcoming-DHMs-Phase-II.pdf>

Booth, Tabling, and Sales Event Guidance: <http://dhhs.ne.gov/Documents/COVID-19-Booth-Tabling-and-Sales-Events-Guidance.pdf>

Guidance for Estate and Farm Auctions: <http://dhhs.ne.gov/Documents/COVID-19-Guidance-for-Estate-and-Farm-Auctions.pdf>

Recommended Best Practices for Barbers and Salons: <http://dhhs.ne.gov/Documents/COVID-19-Recommended-Best-Practices-for-Barbers-and-Salons.pdf>

Restaurant In-Room Dining Reopening Guidelines: <http://dhhs.ne.gov/Documents/COVID-19-Restaurant-In-Room-Dining-Reopening-Guidelines.pdf>

CDC Web Page: [Interim Guidance for Businesses and Employers to Plan and Respond to 2019 Novel Coronavirus \(2019-nCoV\), February 2020](#)

[Coronavirus Preparedness: Tips and Resources for Managers and Employees](#) (Recommendations from USI Risk Services), March 2020

Information for Community-Based and Faith-Based Organizations and Assistance Agencies

Guidelines for the Conduct of Faith-Based Services Including Weddings and Funerals Held in Houses of Worship: <http://dhhs.ne.gov/Documents/COVID-19-Guidelines-for-the-Conduct-of-Faith-Based-Services.pdf>

[Get Your Community- and Faith-Based Organizations Ready for Pandemic Flu - April 2017 \(CDC\)](#)

Printable Flyer (pdf): COVID-19 - Stop the Spread of Germs [English](#) [Spanish](#) [Simplified Chinese](#)

Preparing individuals and communities: <https://www.cdc.gov/coronavirus/2019-ncov/preparing-individuals-communities.html>

Frequently asked Questions about COVID-19: <https://www.cdc.gov/coronavirus/2019-ncov/faq.html>

Questions about COVID-19 in Children: <https://www.cdc.gov/coronavirus/2019-ncov/specific-groups/children-faq.html>

COVID-19 in Pregnant Women: <https://www.cdc.gov/coronavirus/2019-ncov/specific-groups/pregnancy-faq.html>

Information for Healthcare Providers

Telehealth FAQ: <http://dhhs.ne.gov/Documents/COVID-19%20General%20Statewide%20Telehealth%20FAQ.pdf>

Nebraska Dental Association Office Reopening Guidance: <http://dhhs.ne.gov/Documents/COVID-19-NebraskaDentalAssociation-Reopen%20Guidance.pdf>

Checklist - to be prepared to evaluate patients for COVID-19: <https://www.cdc.gov/coronavirus/2019-ncov/downloads/hcp-preparedness-checklist.pdf>

Specimen collection and testing: <https://www.cdc.gov/coronavirus/2019-nCoV/lab/guidelines-clinical-specimens.html>

Infection Control: <https://www.cdc.gov/coronavirus/2019-ncov/hcp/infection-control.html>

NETEC: Personal Protective Equipment (PPE), Guidance on Donning and Doffing: <https://www.youtube.com/watch?v=08XRYOE6CAw&feature=youtu.be>

Home care of people not requiring hospitalization (confirmed or being evaluated for COVID-19): <https://www.cdc.gov/coronavirus/2019-ncov/hcp/guidance-home-care.html>

Information for well travelers from China about COVID-19 - what they should do/watch for: <https://www.cdc.gov/coronavirus/2019-ncov/travelers/from-china.html>

Information for Hospitals

Checklist - Hospital Preparedness: <https://www.cdc.gov/coronavirus/2019-ncov/hcp/hcp-hospital-checklist.html>

Infection Control: <https://www.cdc.gov/coronavirus/2019-ncov/hcp/infection-control.html>

NETEC: Personal Protective Equipment (PPE), Guidance on Donning and Doffing: <https://www.youtube.com/watch?v=08XRYOE6CAw&feature=youtu.be>

Long-term Care Response Planning Tool: <http://dhhs.ne.gov/Documents/Long-Term-Care-COVID-19-Response-Planning-Tool.pdf>

Several additional resources available at: <http://dhhs.ne.gov/Pages/COVID-19-Nebraska-Guidance-Documents.aspx>