



# Coronavirus Disease 2019 (COVID-19) Situation Update – 03 July 2020

Data curated by Johns Hopkins CSSE, including DHHS, WHO, CDC, ECDC, NHC, and DXY and current as of 6:00 4 July 2020

## Highlights

- Fourteen-day totals and test positivity rates for the health district continue to improve.
- Several states—including Arizona, California, Florida, and Texas—continue to experience a resurgence of new cases as directed health measures relax nation-wide.
- Currently, the resurgence of cases has led to the largest single day increases since the outbreak began.
- Travel to these domestic hot spots poses the greatest threat to Nebraskans as conditions continue to improve in the state. Residents should limit travel to areas of COVID resurgence.

## SITUATION IN NUMBERS

### Boone County

- Cumulative cases: 7
- Cumulative cases/100,000 pop: 131
- Recovered cases: 7
- Deaths: 0
- Positivity rate\*: 3.3%

### Nance County

- Cumulative cases: 4
- Cumulative cases/100,000 pop: 112
- Recovered cases: 4
- Deaths: 0
- Positivity rate: 2.4%

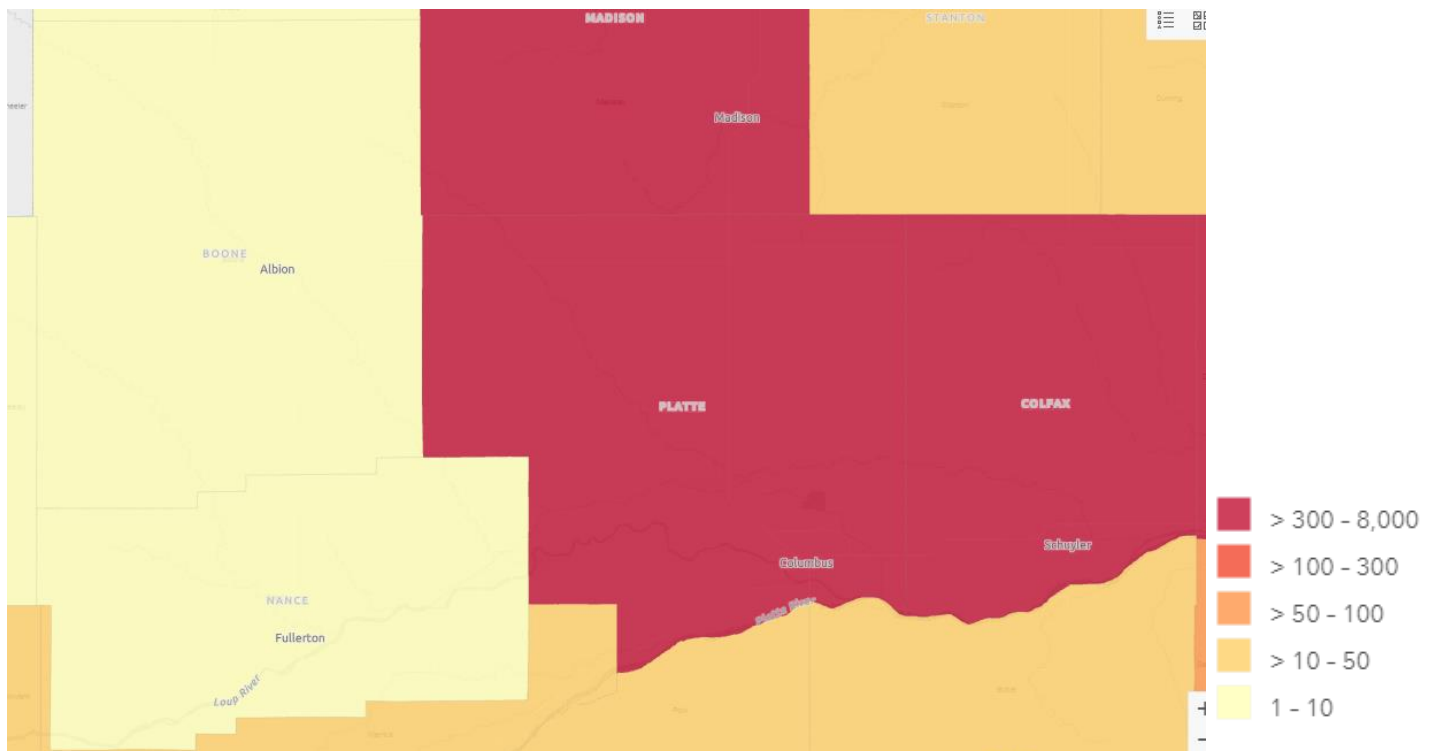
### Colfax County

- Cumulative cases: 665
- Cumulative cases/100,000 pop: 6,210
- Recovered cases: 652
- Deaths: 4
- Positivity rate: 46.4%

### Platte County

- Cumulative cases: 669
- Cumulative cases/100,000 pop: 1,999
- Recovered cases: 649
- Deaths: 3
- Positivity rate: 21.6%

Figure 1. Cumulative confirmed cases of COVID-19 in the East Central District, 3 July 2020



Source: Nebraska Department of Health and Human Services

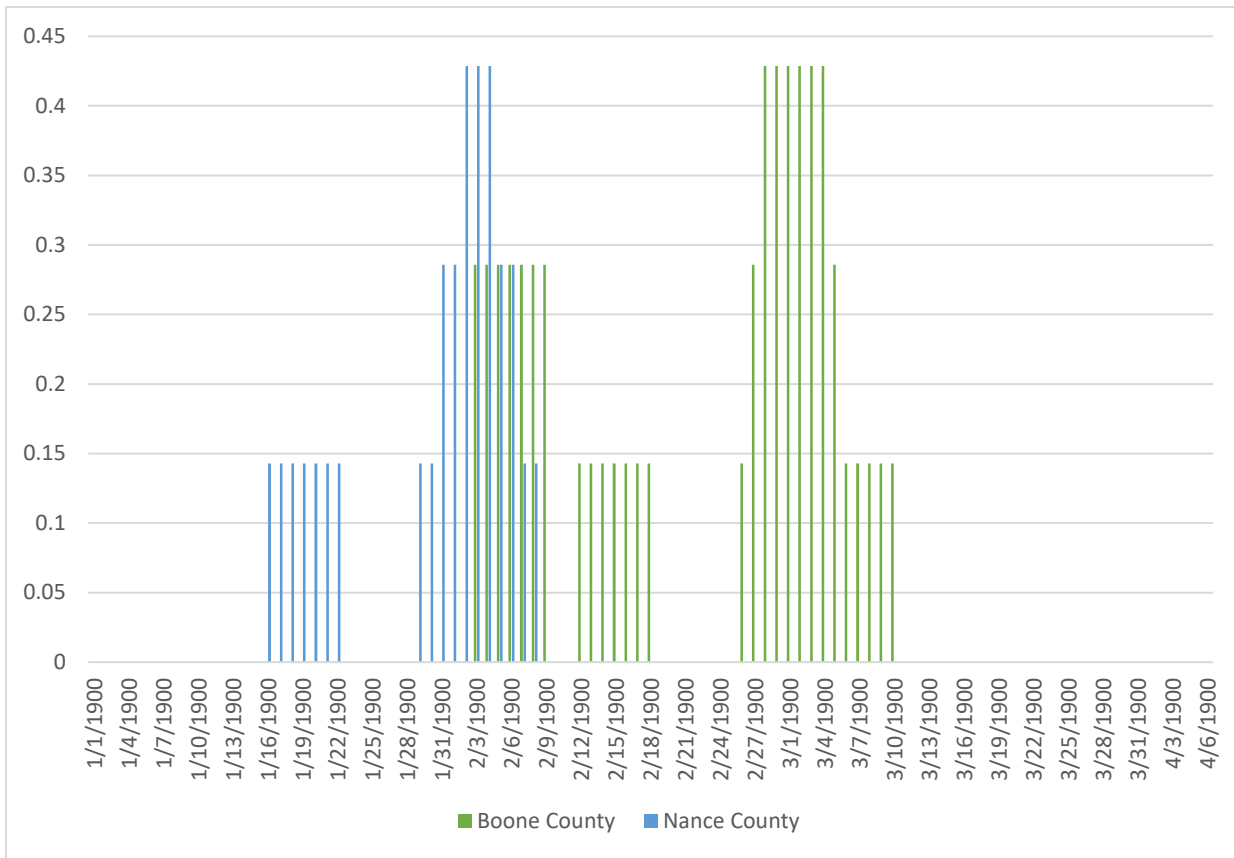


Figure 2. Seven-day average of confirmed cases within East Central District, Boone and Nance Counties

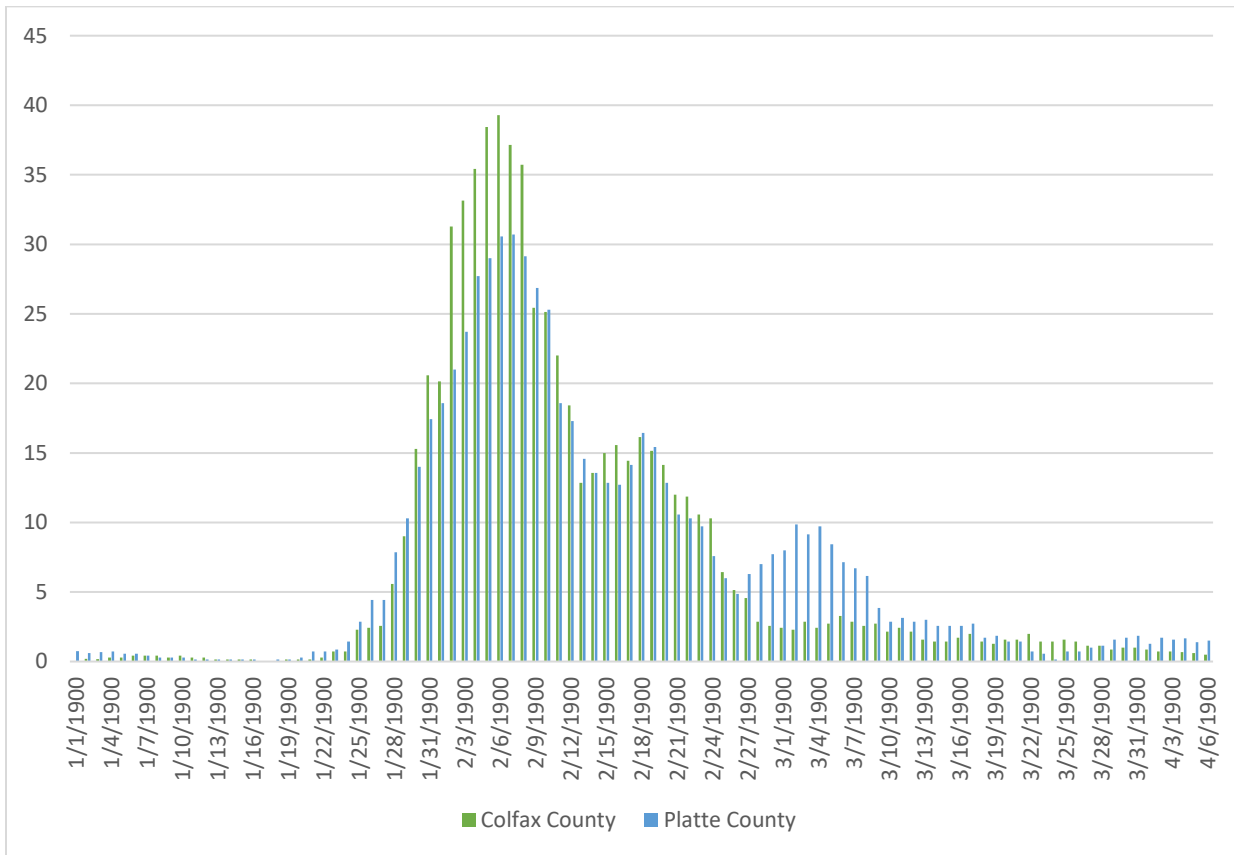


Figure 3. Seven-day average of confirmed cases within East Central District, Colfax and Platte Counties

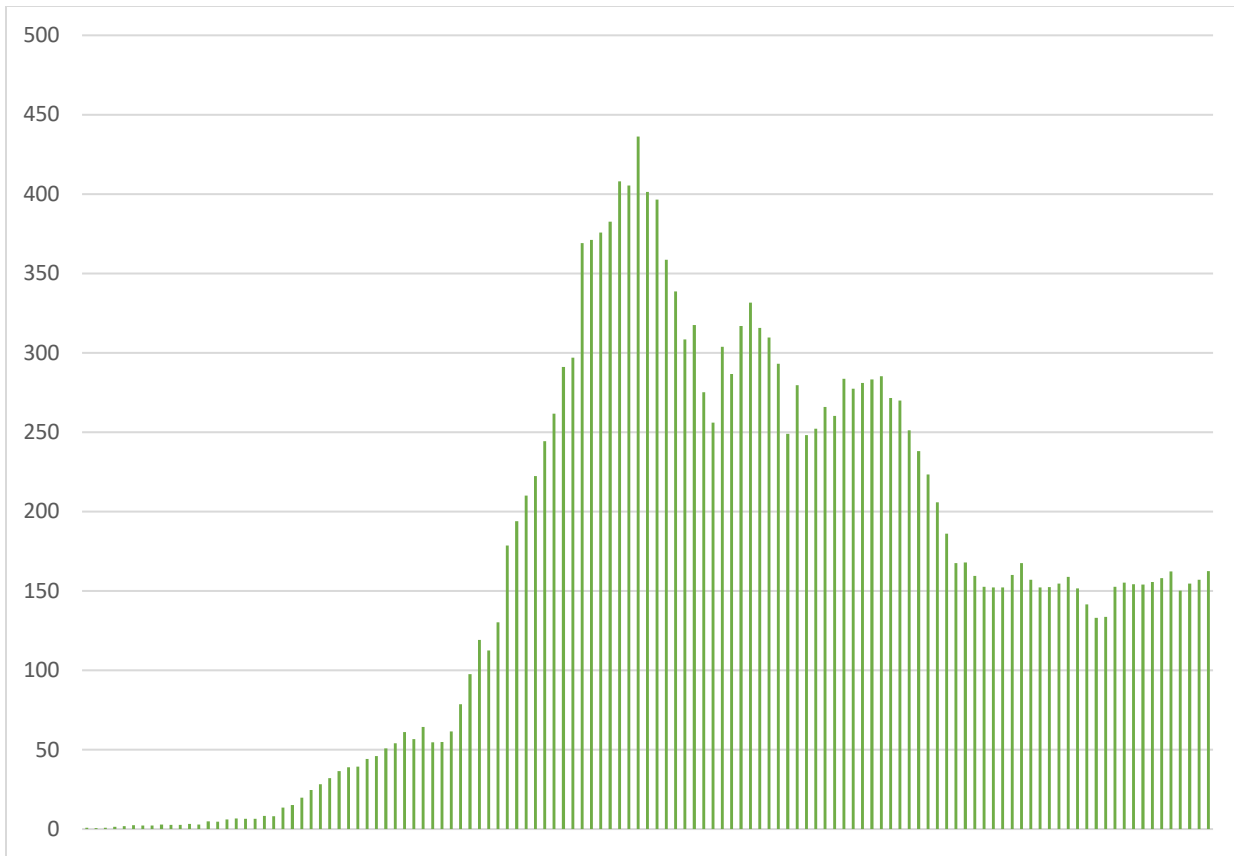


Figure 4. Seven-day average of confirmed cases within Nebraska

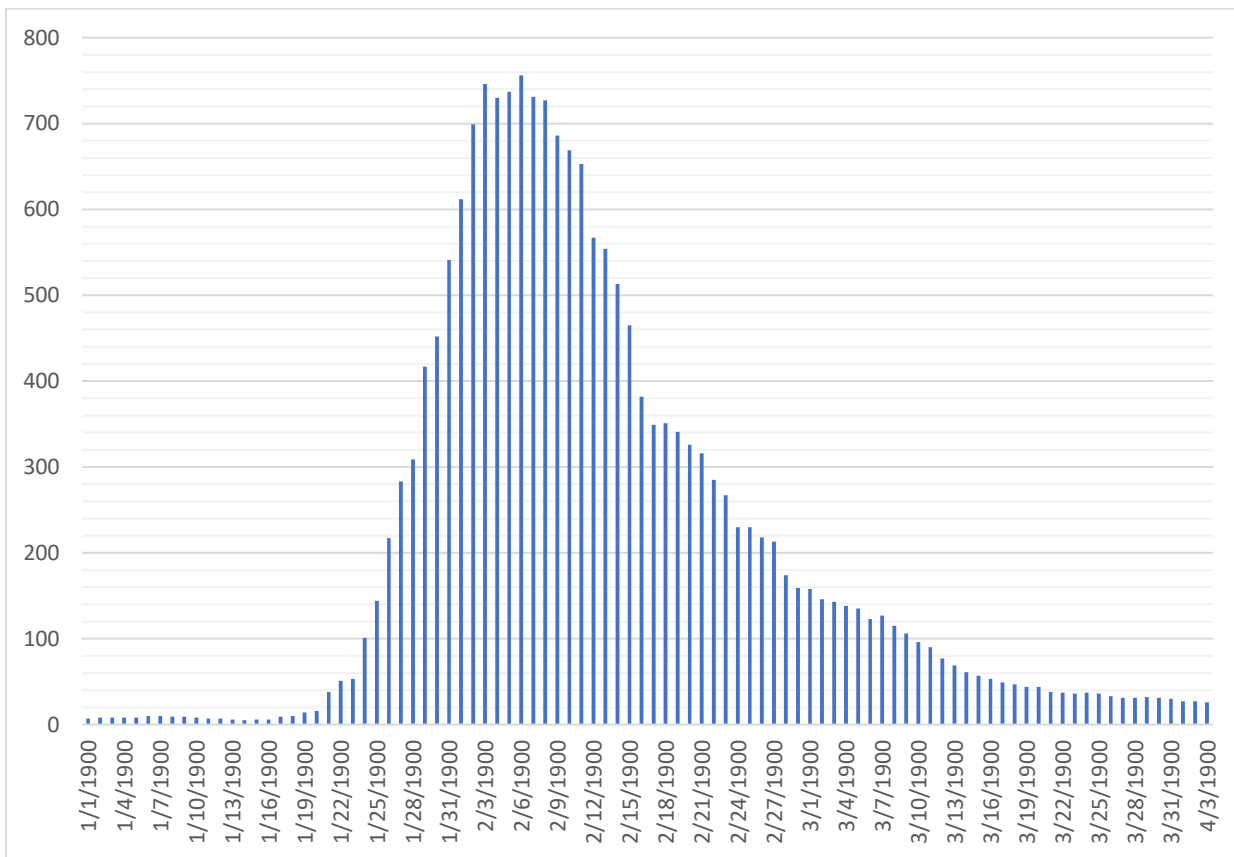


Figure 5. Total positive cases in the past Fourteen days within East-Central Health District

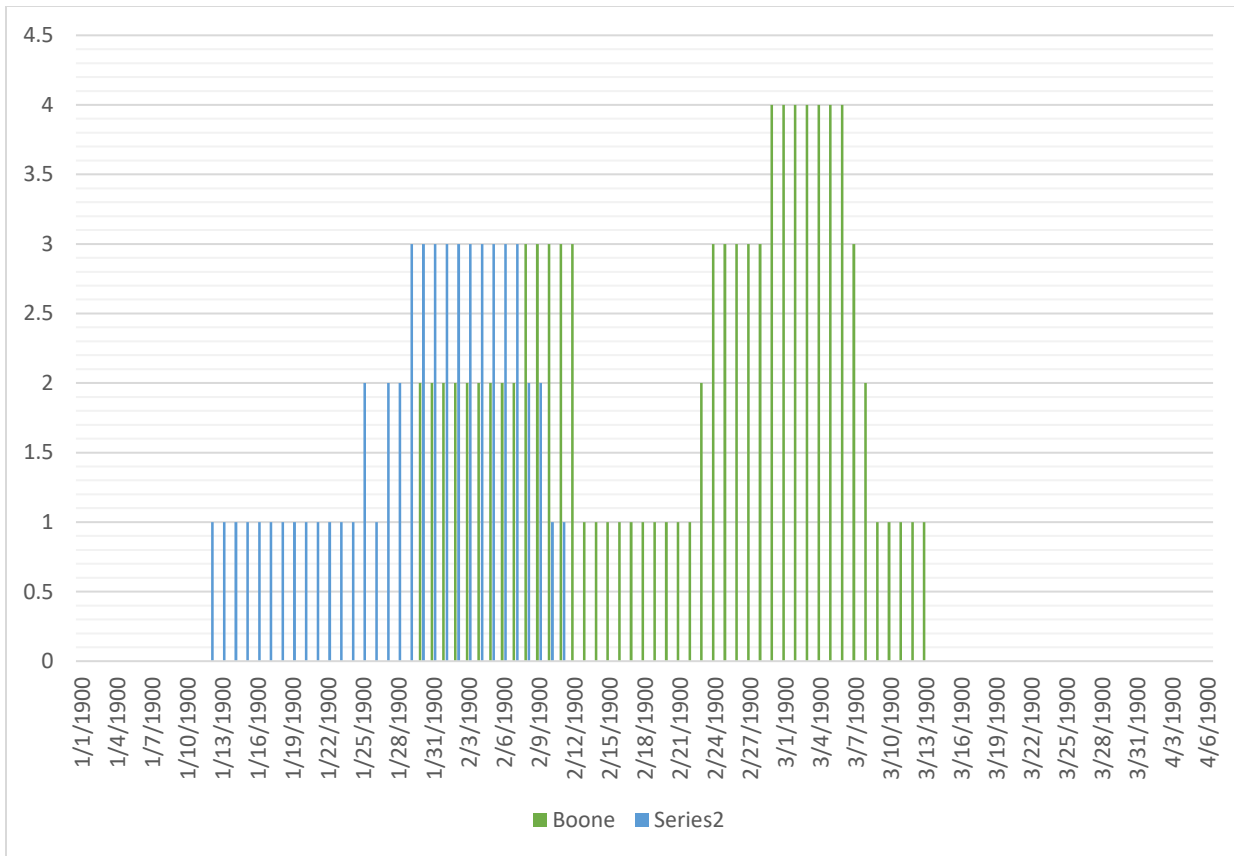


Figure 6. Total positive cases in the past Fourteen days within Boone and Nance Counties

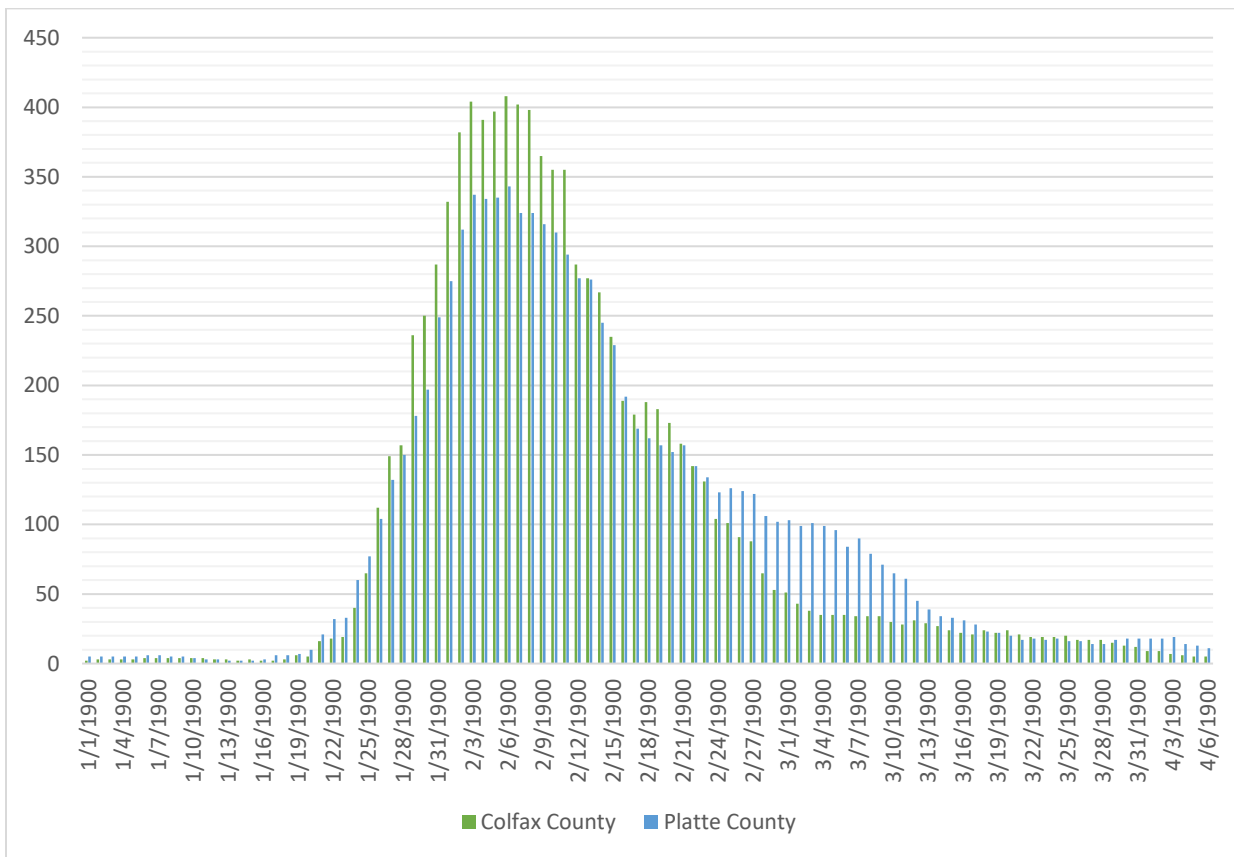


Figure 7. Total positive cases in the past Fourteen days within Colfax and Platte Counties

## STRATEGIC OBJECTIVES

ECDHD's strategic objectives for this response are to:

- Interrupt human-to-human transmission including to reduce secondary infections among close contacts and health care workers, prevent transmission amplification events, and prevent further spread.\*
- Identify, isolate and care for patients early, including to provide optimized care for infected patients.
- Communicate critical risk and event information to all communities and counter misinformation.
- Minimize social and economic impact through multisectoral partnerships.

\*This can be achieved through a combination of public health measures, such as rapid identification, diagnosis and management of the cases, identification and follow-up with contacts, partnership in infection prevention and control in health care settings, implementation of health measures for travelers, raising awareness in the population and risk communication.

## RECOMMENDATIONS AND ADVICE FOR THE PUBLIC

Get the facts on COVID-19 from reliable sources to help you accurately determine your risks so that you can take reasonable precautions. Seek guidance from your healthcare provider, ECDHD, DHHS, CDC, or your employer for accurate information on COVID-19.

It is important to be informed of the situation and take appropriate measures to protect yourself and your family. For most people, COVID-19 infection will cause mild illness; however, it can make some people very ill and, in some people, it can be fatal. Older people, and those with pre-existing medical conditions (such as cardiovascular disease, chronic respiratory disease or diabetes) are at greater risk for severe disease. Stay up to date with the latest information from the CDC [here](#).

### Information for Individuals<sup>1</sup>

Directed Health Measures in effect for Boone, Colfax, Nance and Platte counties from June 1-June 30

<http://dhhs.ne.gov/Documents/DHM-ECHD-002.pdf>

Reopening guidelines: <http://dhhs.ne.gov/Documents/COVID-19-Outline-of-Changes-to-Upcoming-DHMs-Phase-II.pdf>

Centers for Disease Control and Prevention (CDC) <https://www.cdc.gov/coronavirus/2019-ncov/index.html>

Frequently Asked Questions: <https://www.cdc.gov/coronavirus/2019-ncov/faq.html>

Know the facts about coronavirus disease 2019 (COVID-19) and help stop the spread of rumors: <https://www.cdc.gov/coronavirus/2019-ncov/about/share-facts-stop-fear.html>

### Information for Schools<sup>2</sup>

CDC Interim Guidance for Administrators of US Childcare Programs and K-12 Schools to Plan, Prepare, and Respond to Coronavirus Disease 2019 (COVID-19) <https://www.cdc.gov/coronavirus/2019-ncov/specific-groups/guidance-for-schools.html>

Frequently asked Questions about COVID-19: <https://www.cdc.gov/coronavirus/2019-ncov/faq.html>

---

<sup>1</sup> Information adapted from WHO guidance

<sup>2</sup> Information adapted from Douglas County Health Department

Questions about COVID-19 in Children: <https://www.cdc.gov/coronavirus/2019-ncov/specific-groups/children-faq.html>

COVID-19 in Pregnant Women: <https://www.cdc.gov/coronavirus/2019-ncov/specific-groups/pregnancy-faq.html>

Planning for pandemic influenza can easily be adapted for COVID-19

CDC Get Your School Ready for Pandemic Flu (April 2017): <https://www.cdc.gov/nonpharmaceutical-interventions/pdf/gr-pan-flu-ed-set.pdf>

## **Information for Businesses**

Reopening guidelines: <http://dhhs.ne.gov/Documents/COVID-19-Outline-of-Changes-to-Upcoming-DHMs-Phase-II.pdf>

Booth, Tabling, and Sales Event Guidance: <http://dhhs.ne.gov/Documents/COVID-19-Booth-Tabling-and-Sales-Events-Guidance.pdf>

Guidance for Estate and Farm Auctions: <http://dhhs.ne.gov/Documents/COVID-19-Guidance-for-Estate-and-Farm-Auctions.pdf>

Recommended Best Practices for Barbers and Salons: <http://dhhs.ne.gov/Documents/COVID-19-Recommended-Best-Practices-for-Barbers-and-Salons.pdf>

Restaurant In-Room Dining Reopening Guidelines: <http://dhhs.ne.gov/Documents/COVID-19-Restaurant-In-Room-Dining-Reopening-Guidelines.pdf>

CDC Web Page: [Interim Guidance for Businesses and Employers to Plan and Respond to 2019 Novel Coronavirus \(2019-nCoV\), February 2020](#)

[Coronavirus Preparedness: Tips and Resources for Managers and Employees](#) (Recommendations from USI Risk Services), March 2020

## **Information for Community-Based and Faith-Based Organizations and Assistance Agencies**

Guidelines for the Conduct of Faith-Based Services Including Weddings and Funerals Held in Houses of Worship: <http://dhhs.ne.gov/Documents/COVID-19-Guidelines-for-the-Conduct-of-Faith-Based-Services.pdf>

[Get Your Community- and Faith-Based Organizations Ready for Pandemic Flu - April 2017 \(CDC\)](#)

Printable Flyer (pdf): COVID-19 - Stop the Spread of Germs [English](#) [Spanish](#) [Simplified Chinese](#)

Preparing individuals and communities: <https://www.cdc.gov/coronavirus/2019-ncov/preparing-individuals-communities.html>

Frequently asked Questions about COVID-19: <https://www.cdc.gov/coronavirus/2019-ncov/faq.html>

Questions about COVID-19 in Children: <https://www.cdc.gov/coronavirus/2019-ncov/specific-groups/children-faq.html>

COVID-19 in Pregnant Women: <https://www.cdc.gov/coronavirus/2019-ncov/specific-groups/pregnancy-faq.html>

## **Information for Healthcare Providers**

Telehealth FAQ: <http://dhhs.ne.gov/Documents/COVID-19%20General%20Statewide%20Telehealth%20FAQ.pdf>

Nebraska Dental Association Office Reopening Guidance: <http://dhhs.ne.gov/Documents/COVID-19-NebraskaDentalAssociation-Reopen%20Guidance.pdf>

Checklist - to be prepared to evaluate patients for COVID-19: <https://www.cdc.gov/coronavirus/2019-ncov/downloads/hcp-preparedness-checklist.pdf>

Specimen collection and testing: <https://www.cdc.gov/coronavirus/2019-nCoV/lab/guidelines-clinical-specimens.html>

Infection Control: <https://www.cdc.gov/coronavirus/2019-ncov/hcp/infection-control.html>

NETEC: Personal Protective Equipment (PPE), Guidance on Donning and Doffing: <https://www.youtube.com/watch?v=08XRYOE6CAw&feature=youtu.be>

Home care of people not requiring hospitalization (confirmed or being evaluated for COVID-19): <https://www.cdc.gov/coronavirus/2019-ncov/hcp/guidance-home-care.html>

Information for well travelers from China about COVID-19 - what they should do/watch for: <https://www.cdc.gov/coronavirus/2019-ncov/travelers/from-china.html>

## **Information for Hospitals**

Checklist - Hospital Preparedness: <https://www.cdc.gov/coronavirus/2019-ncov/hcp/hcp-hospital-checklist.html>

Infection Control: <https://www.cdc.gov/coronavirus/2019-ncov/hcp/infection-control.html>

NETEC: Personal Protective Equipment (PPE), Guidance on Donning and Doffing: <https://www.youtube.com/watch?v=08XRYOE6CAw&feature=youtu.be>

Long-term Care Response Planning Tool: <http://dhhs.ne.gov/Documents/Long-Term-Care-COVID-19-Response-Planning-Tool.pdf>

**Several additional resources available at:** <http://dhhs.ne.gov/Pages/COVID-19-Nebraska-Guidance-Documents.aspx>